

# Welcome to Plainwell

*A good place to live . . .*



*to work . . .*



*J. Bevins*

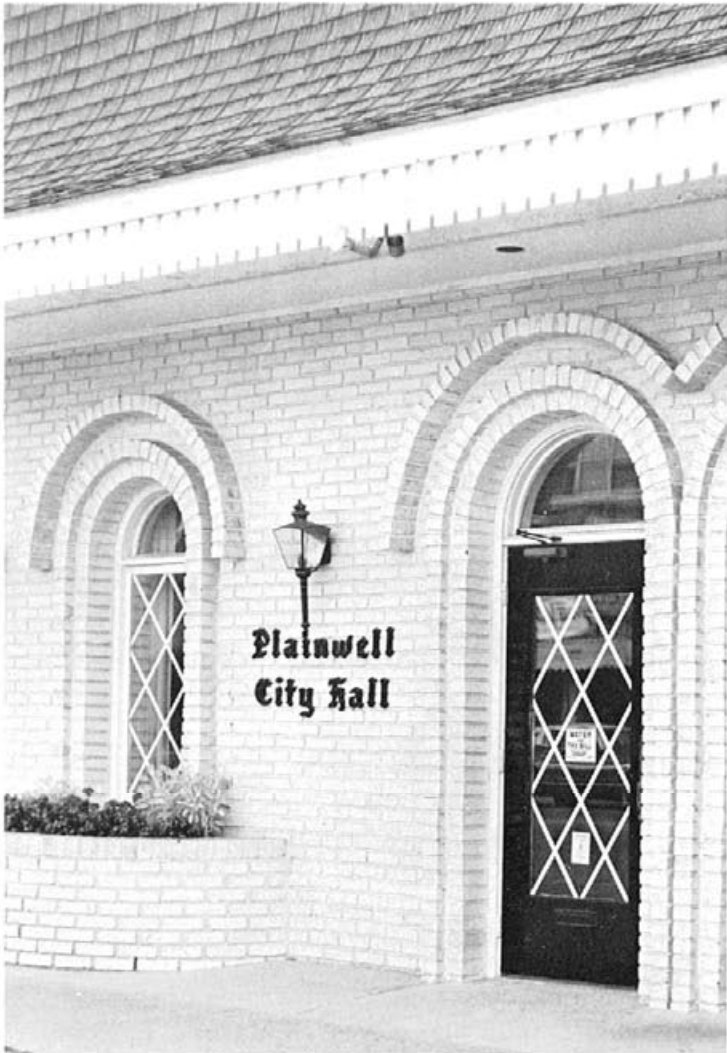
*to grow . . .*



*. . . and to enjoy.*



# Community Services



J. Bevins

## City Government

### Police

Police protection is provided by a chief and six full-time officers plus one auxiliary officer. Back-up support is provided by the Michigan State Police in Wayland, and the Allegan County Sheriff's Department, which has a substation staffed by four deputies in Plainwell.

### Fire

Fire protection is supplied by 24 volunteer firemen. Equipment includes three pumpers, two grass trucks and a water tanker, all equipped with two-way radios. Back-up protection, including emergency rescue equipment is supplied by the Otsego Volunteer Fire Department. Plainwell's fire insurance rating is "Class 7".

### Water

Plainwell's water system is supplied by four wells with a designed capacity of 3,800 gallons per minute, and elevated storage capacity of 250,000 gallons. The water is treated with chlorine and fluoride.

### Sewage

Sewage treatment consists of primary and secondary sedimentation with a Bio-Disk filtration system. The designed capacity of the system is 1,500,000 gallons per day. Present usage averages 450,000 gallons per day.



## Telephone

Telephone service is provided by Michigan Bell from offices in Kalamazoo.

## Electric Service

Electric service is provided by Consumers Power Company, located in Kalamazoo.

## Hospital

Hospital services in Plainwell are provided by Pipp Community Hospital, a forty-five bed, general hospital built in 1962. Pipp is fully licensed by the State of Michigan, fully accredited by the Joint Commission of Accreditation of Hospitals and a member of the American Hospital Association.

In addition to family practice and general surgery, all specialties are available through consulting staff from Kalamazoo.

Licensed beds include coronary care unit, general medical/surgical, pediatric and Ob/Gyn. Emergency services are staffed 24 hours per day, seven days a week.



J. Bevins

## Ambulance

Plainwell is served by a private ambulance service, with three emergency vehicles.

## Garbage Service

Private firms handle Plainwell's garbage pick-up.



J. Bevins

## Communications

Plainwell is served by the Weekly Union-Enterprise and by Michigan's oldest daily newspaper, *The Kalamazoo Gazette*. There are numerous AM & FM radio stations serving the area, and all major TV networks, including Public Broadcasting, can be received. A local Cable TV operation provides a large selection of stations including Home Box Office.

## Recreation

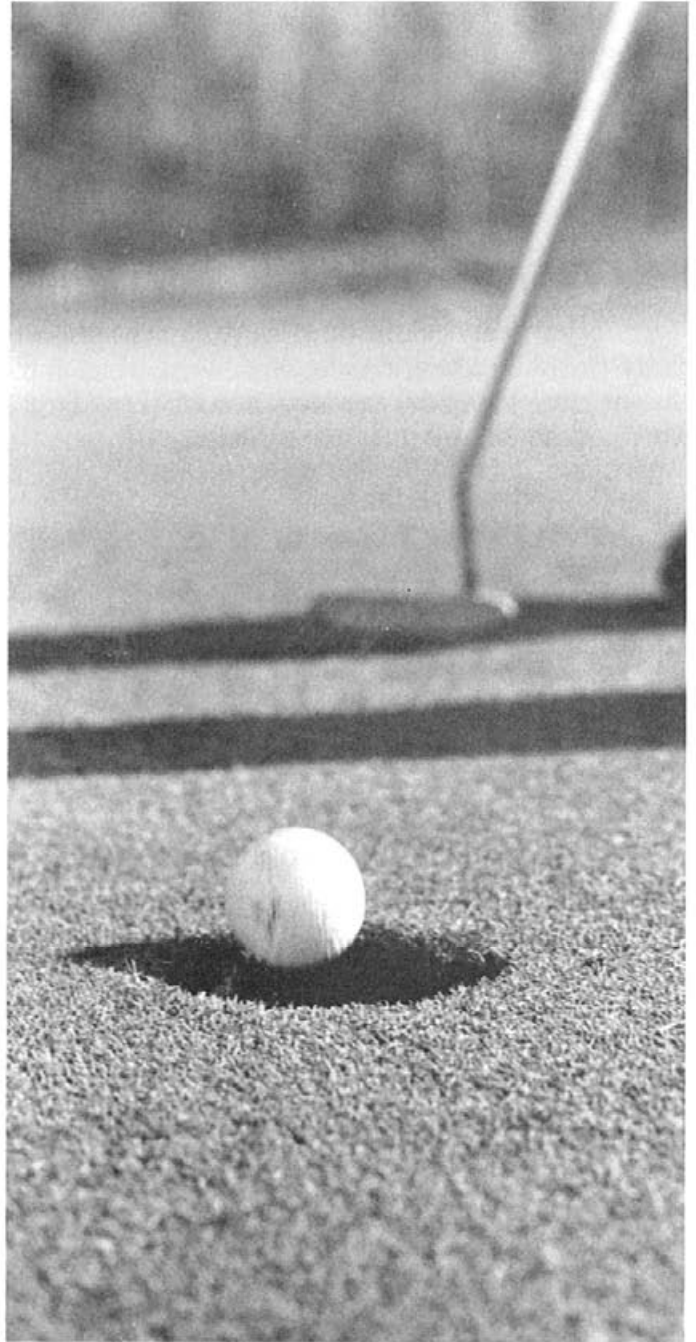
Facilities for many types of recreation are available in the Plainwell area.

Downhill and cross country skiing are popular local sports. Three downhill ski areas are located in easy driving distance from Plainwell. Cross country ski trails are available at local golf courses and state parks as well as on private property.

Plainwell is situated near Lake Michigan and deep water boating and fishing are enjoyed by many Plainwell residents. Swimming, water skiing, fishing and boating are also popular pastimes on the numerous smaller lakes in the area.

Golfers enjoy using eighteen public golf courses in the Plainwell area.

Excellent hunting is available in the nearby Allegan State Game Area and other public lands.



*J. Bevins*



# Downtown Plainwell

Many historic buildings have been restored or renovated to house modern businesses on Plainwell's Main Street. Hardware stores, a theater, clothing stores, a quilt shop, card shops, restaurants and other businesses make Plainwell's downtown a pleasant place to shop.

Some commercial properties in prime locations are still available in the downtown area. Information about business opportunities in downtown Plainwell can be obtained by writing or calling City Hall, 141 North Main Street, Plainwell, MI. 49080, 616-685-6821.

## Financial Information

### Industrial and Commercial Development Acts

Michigan's "Industrial and Commercial Development Acts" (Acts No. 198, and 255 P.A. 1974) provide significant tax incentives to business and industry to encourage improvement of aging plants or construction of new facilities in Michigan.

Acts 198 and 225 provide the government of the City of Plainwell with the ability to allow a 50% tax reduction for up to 12 years to firms wishing to either replace or restore obsolete facilities or to build new facilities in the city.



J. Bevins

### Economic Development Corporation

The City of Plainwell has established an Economic Development Corporation which allows for the issuance of tax free, low interest bonds for construction of large industrial and commercial developments.



J. Bevins

### Banking and Finance

A full range of banking and financial services are provided by numerous banks and savings and loan associations located in the city and surrounding area.

### Tax Rate

Plainwell's combined city, school, "special voted" and county tax for 1979 was divided as follows:

School	\$34.2755	
City	15.0000	
County	<u>6.2090</u>	
	\$55.4845	per \$1000 of assessed valuation

### Assessment

In Michigan, real and personal property should be assessed at no more than 50% of true cash value.

(Fold out page.)



# LABOR

## PLAINWELL, MICHIGAN LOCAL COMPANIES, PRODUCTS AND EMPLOYEES

Company	Established	Product/Service	Employment
Angle Steel	1911	Steel Products	130
Ano-Kal Company	1960	Coating, Engraving	19
Arcan's, Inc.	1950	Bags, Polyethylene Products; Cartons	20
Bowers Machine Company	1954	Tools and Dies; Stampings	3
Essex International Inc.	1972	Stampings, Automotive	150
Helm Industries, Inc.	1978	Construction Machinery & Equip.	11
Hughes Engraving - Plainwell Inc.	1950	Engraving, Printing, etc.	13
Kosier, H. W. Inc.	1978	Furniture	3
Lad Chemical Co. Inc.	1968	Chemical Preparations	11
Lawrence Industries	1965	Electroplating, Polishing, Anodizing	4
Mitchell, N. R., Inc.	1976	Well and Pump Production	10
Murco Inc.	1920	Meat Packing House Products	300
Pallets Unlimited, Inc.	1974	Pallets, Skids, Wood Products	4
Plainwell Ice Cream Co., Inc.	1978	Ice Cream	4
Plainwell Paper Co., Inc.	1886	Paper	350
Plainwell Vault & Monument Co.	1960	Concrete Products	2
Premiere Printing Corp.	1959	Printing	15
Rideau Interiors	1966	Curtains, Draperies	N/A
Sprague, Elwyn Co., Inc.	N/A	Machinery-Miscellaneous	6
Stiles Manufacturing	1980	Agriculture Distillation Equip.	4
Union Enterprise, The	1974	Newspaper Publishing	6
Warner Block Company	1945	Concrete Blocks, Bricks	3



# DEMOGRAPHICS

## History

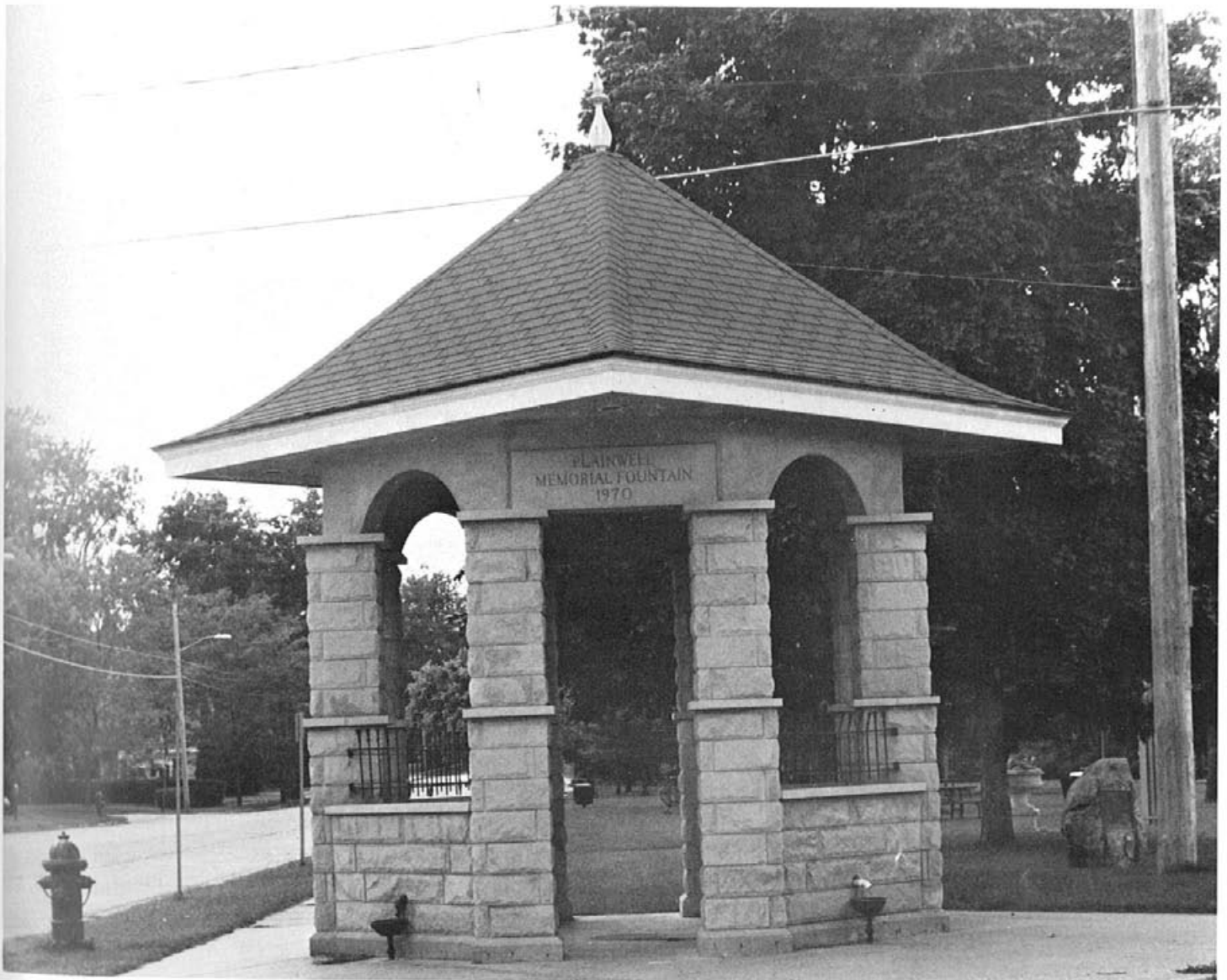
The City of Plainwell grew up around a hotel and entertainment center called "The Plainwell House" which was started in 1853 by a man named Wellever. "The Plainwell House" was located at the intersection of the Plank Road, a then new direct route from Kalamazoo to Grand Rapids, and another road which was a direct route to the city of Allegan.

## Population

The estimated population of Plainwell in 1977 was 4,502.

## Climate

The area enjoys a moderate climate with an average July temperature of 71.9° and an average January temperature of 19.3°. The average annual rainfall is 32.9 inches. The average annual snowfall is 76.6 inches.



J. Bevins

# Transportation

## Trucking

Plainwell is served on a daily basis by thirteen truck lines. United Parcel Service is out of Kalamazoo.

## Highways

Plainwell is located at the junction of the U.S. 131 freeway (north-south) and M-89 (east-west) a short distance north of I-94.

## Railroads

Plainwell is located on the main line of the ConRail.

## Air

Plainwell airport is located 1.5 miles north of the city and accommodates business and private planes.

Kalamazoo Municipal Airport is the closest airport providing commercial service. Republic Airlines serves the Kalamazoo airport. Air freight and air express are available.

International airports are located in Grand Rapids (35 miles) and Battle Creek (25 miles).

## Bus

Greyhound Bus Lines serve Plainwell.





*Plainwell is located ten miles north of Kalamazoo and 40 miles south of Grand Rapids. It is 30 miles east of Lake Michigan and 140 miles west of Detroit.*

**Brochure sponsored by:** The Plainwell Chamber of Commerce  
and  
The City of Plainwell

**Photographs by:** James Bevins, Plainwell

**Copy by:** Sandra C. Rosenberger, Plainwell

**Paper contributed by:** Plainwell Paper Company, Plainwell

**Printed by:** Premiere Printing Company, Plainwell

For additional information contact: Plainwell City Hall  
141 North Main Street  
Plainwell, MI 49080  
616-685-6821



Plainwell  
City Hall

  
**Plainwell Paper Co., Inc.**  
An Affiliate of Philip Morris Incorporated